

# PSF-2

## Power Strap Feeder



**The efficient,  
inexpensive  
alternative to  
hand feeding  
strapping**

Signode's PSF-2 power strap feeder is designed to improve virtually any manual packaging operation regardless of package size, strapping material, pallet type, or packaging line configuration. Its modular design enables you to customize the PSF-2 to accommodate the unique requirements of your packaging operation. The PSF-2 features automatic strap feed shutoff and an automatic seal feed bend over device. Some popular options include: chute extensions, casters, pallet void feeding attachments, strap grippers and directors, and more.

### Efficiency

Automatically feeding strapping around the load, the PSF-2 greatly improves production speed and helps eliminate bottle necks. It's also easily incorporated into existing conveyor systems.

### Economy

The PSF-2 requires only a single operator (two or more are required for manual strap feeding), which can significantly reduce operating costs. Your labor cost savings, coupled with increased production, elimination of bottle-necks and the PSF-2's low cost, gives you a quick return on investment.

**SIGNODE®**

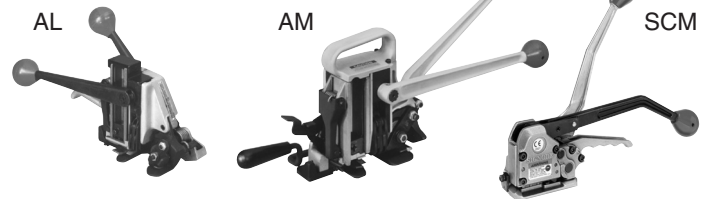
**Signode Distributor Sales**  
180 Hastings Drive  
Buffalo Grove, IL 60089  
1-847-215-8925  
Fax 1-847-215-9599

## Strapping tools for the PSF-2

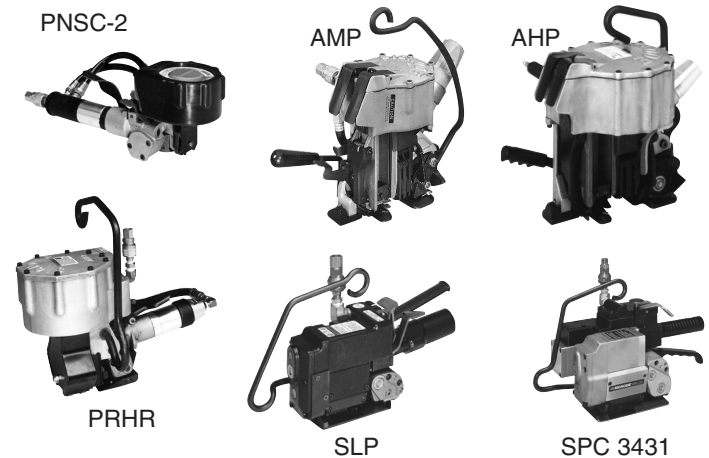
Choosing the proper strapping tool is essential to your packaging operations. A sampling of your options is shown here.

### Steel Strapping

#### Manual Combination Tools



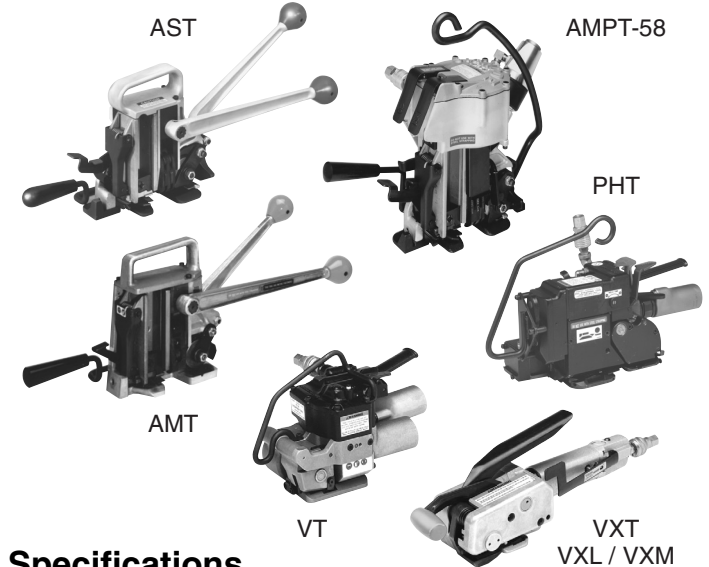
#### Pneumatic Combination Tools



### Plastic Strapping

#### Manual Combination Tools

#### Pneumatic Combination Tools



### Specifications

**Steel strapping:** 3/8" x .015" to 3/4" x .031"  
(9.5mm x 0.38mm to 19mm x 0.79mm)

**Plastic strapping:** Tenax® 1716, 1718, 1816  
1818, 1822, 2030, 2040  
Dymax® 304, 306, 504, 508  
Contrax® 716, 718, 816, 818

**Maximum package size:** 78"H (1981mm), 48" (1219mm) front to back

**Dispenser:** DF-23, DF1-12D

**Tool suspension:** Overhead jib suspension with cable

**Motor:** 1/4 hp (1,864 KW), 1,140 RPM, Single Phase, 115V, 60Hz

Note: The PSF-2 is shipped partially assembled.  
Your Signode Distributor will assist with installation.

# Options

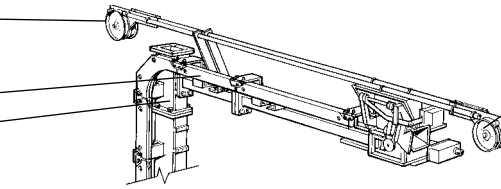
# PSF-2

## Power Strap Feeder

**Strap chute and support extensions** add height or width for larger loads.

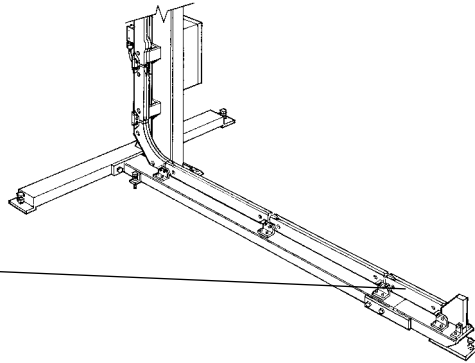
**Strap chute extension**

**Upper support extension**

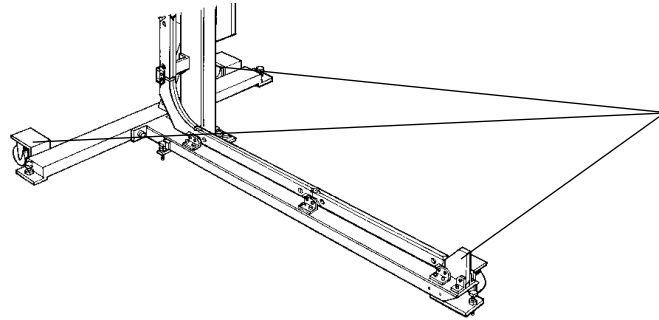


**Dual girth strap director** enables you use either plastic or steel strapping, or two different strap sizes, on an inter-mixed basis without re-threading the PSF for each change.

**Lower base extension**



**Batten raiser** lifts the batten, enabling the underfeed strap to strap the batten to the load.

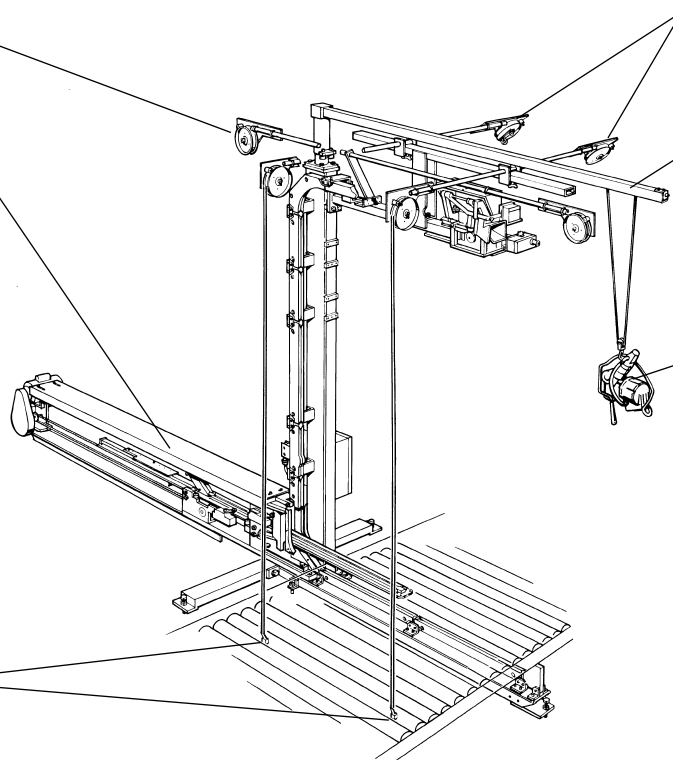


**Casters** convert the PSF-2 into a mobile strapping station that can be used in multiple production lines.

**Single girth strap director** enables the strapping dispenser to be placed behind the power strap feeder.

**Pallet void feeding attachments (PVFAs)** enable strapping to be threaded through pallet voids. Activated by a foot switch, the PVFA moves forward automatically. The operator inserts strapping into the feeder head which automatically feeds it through the fully enclosed chute system around the load, through the pallet void, and back to the operator. The operator removes the strapping from the chute, and the PVFA retracts automatically. PVFA, or underfeed, loads can be handled on an intermixed basis.

**Pre-drape strap grippers**, installed in the conveyor, hold pre-threaded strapping in the path of incoming loads. The strap drapes itself around the load.



**Strap directors**, mounted on the feeder head support arm, allow pre-draping of vertical straps at right angles.

**Overhead jib suspension with cable**

**Strapping tool**