



MODEL SMLPA-200 – 65” DIAMETER 5,000 LB. CAPACITY
AUTOMATED LOW PROFILE SMART SERIES STRETCH WRAPPER
(WITH NO-THREAD® POWERED PRE-STRETCH CARRIAGE)

**MODEL SMLPA-200 MACHINE SPECIFICATIONS
LOW PROFILE AUTOMATED TURNTABLE**

CAPACITIES

PRODUCTION

- Up to 55 loads per hour, based on load size and configuration

LOAD WEIGHT

- 5,000 lbs.

APPROX SHIPPING WEIGHT

- 2800 lbs.

LOAD SIZE

- 50"W x 50"L x 80H (78" diag) – other wrap heights available

ELECTRICAL REQUIREMENTS

- 120V/1/60 15A

MACHINE DIMENSIONS

- 128" L x 66" W x 86 3/8" H with compressor (80" wrap height)
- 117 1/2" L x 66" W x 86 3/8" H without compressor height

AIR REQUIREMENTS

None (Air compressor included)

FEATURES

CONTROLS

- Allen Bradley Micrologix 1200 PLC
- 24V control system
- Current overload protection
- NEMA 4/12 control cabinet
- Autoheight sensing photoeye
- Power on/off switch and indicator light
- Start/stop push button
- Large emergency stop (push pull type)
- Manual carriage up/down function
- Variable table speed (12 RPM) with automatic home position
- Carriage speed adjustment
- Top and bottom wrap selectors
- Reinforced wrap/manual rotation control
- Film tension adjustment
- Top cover pause
- Mode switch (Manual or Automatic)
- Pull cord with 40' of cable

FILM DELIVERY SYSTEM

- 20" NO-THREAD® Powered Pre-Stretch Carriage
- 1/2 HP AC motor with Allen Bradley variable frequency drive
- Lifetime warranty on blue pre-stretch rollers
- Film force release for easy pull at start and end of cycle
- 50-300% pre-stretch ratio (preset to cust. spec, Std 200%)
- Electronic film tension control with analog sensor
- Film roping bar
- Lexan roller cover for operator safety

FILM CARRIAGE DRIVE

- 1/2 HP AC motor with Allen Bradley variable frequency drive
- Two #50 carriage lift chains enclosed in tower for safety
- Bearing supported maintenance free guide wheels

FILM TAIL TREATMENT

- **Automated Cut/Clamp & Wipe** system
- Pulse controlled cutter
- Film alignment arm & Brush on film tail treatment

TURNTABLE

- 65" dia. 3/8" steel plate
- 32 heavy duty non metallic lube-free table supports
- 3-1/8" table height
- 2-3/8" high base with full surround for safety and strength
- Ramp accessible on all three sides

TURNTABLE DRIVE

- 3/4 HP AC motor with Allen Bradley variable frequency drive
- 0-12 RPM variable speed
- #50 ANSI heavy duty chain drive
- Electronic soft start/stop
- Positive turntable alignment controlled by proximity sensor

STRUCTURE

- 14 gauge formed steel tower
- Forklift Portable base design from both ends
- Heavy duty structural steel construction
(Because of the location of the compressor, it is not recommended to carry from back with forklift.)

TECHNICAL INFORMATION

The machine is provided with a manual including electro/mechanical schematics and drawings, troubleshooting guide & Installation instructions

WARRANTY

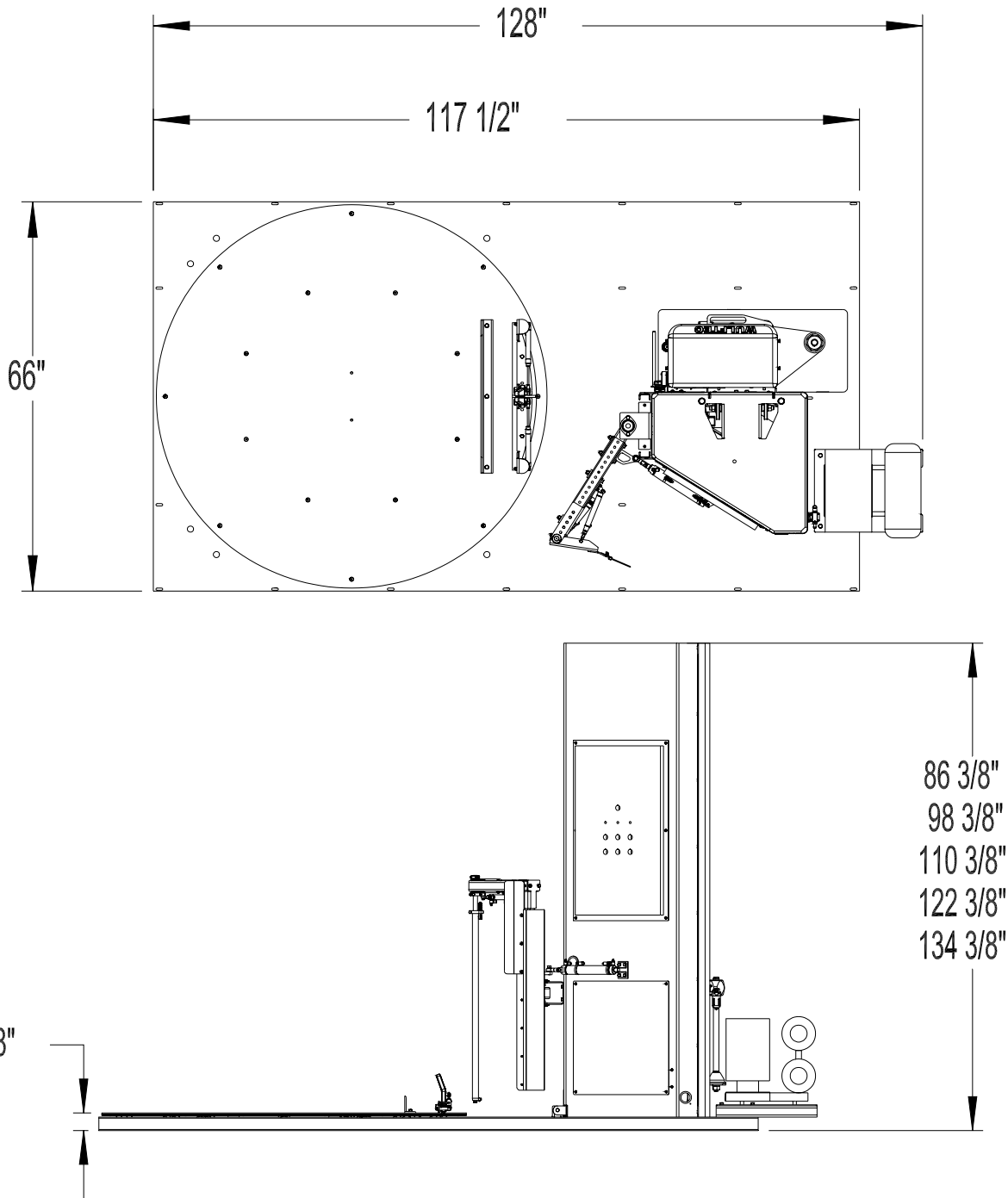
- All Wulftec's semi-automatic machines come with a three year warranty
- All Wulftec prestretch compound rollers have a lifetime warranty.
- 10 year warranty on structural frame (see Chapter 9 for complete warranty details)



209 Wulftec
Ayer's Cliff, Quebec, Canada, J0B 1C0
Tel.: (819) 838-4232
Fax: (819) 838-5539
Toll free (877) WULFTEC
(877) 985-3832
E Mail: wulftec@wulftec.com
Web Site: <http://www.wulftec.com>

DISTRIBUTED BY:

Note: All machine specifications and pricing are subject to change without prior notice.



**MODEL SMLPA-200 – 65" DIAMETER 5,000 LB. CAPACITY
AUTOMATED LOW PROFILE SMART SERIES STRETCH WRAPPER
(WITH NO-THREAD® POWERED PRE-STRETCH CARRIAGE)**